

## Overview

---

The CZR15/CZR15W is a 2-way loudspeaker offering high power handling and outstanding sonic performance in a portable, lightweight, yet rugged design. Its versatile, compact enclosure design makes the lightweight CZR15/CZR15W ideal for range of live performance and installed sound environments—from live bands at outdoor festivals to DJ's in clubs—these loudspeakers deliver crystal clear, high-quality sound with impressive low frequency performance.



CZR15



CZR15W

## Features

---

- 2-way loudspeaker with a 2" HF and a 15" LF
- Features Yamaha's own Wide Dispersion CD Waveguide Horn
- High power 800W (PGM) power handling and Bi-amp capable
- Floor monitoring setting enables mirroring configuration
- Lightweight yet very durable plywood cabinet with premium graded Polyurea coating
- Dual-angle pole socket
- Optional speaker cover (SPCVR-DZR15)
- Rotatable horn and variety of U-bracket options (UB-DZR15H/V) for rigging allow for very flexible setup and speaker placement
- Durable black or white finish

## Specifications

### General Specifications

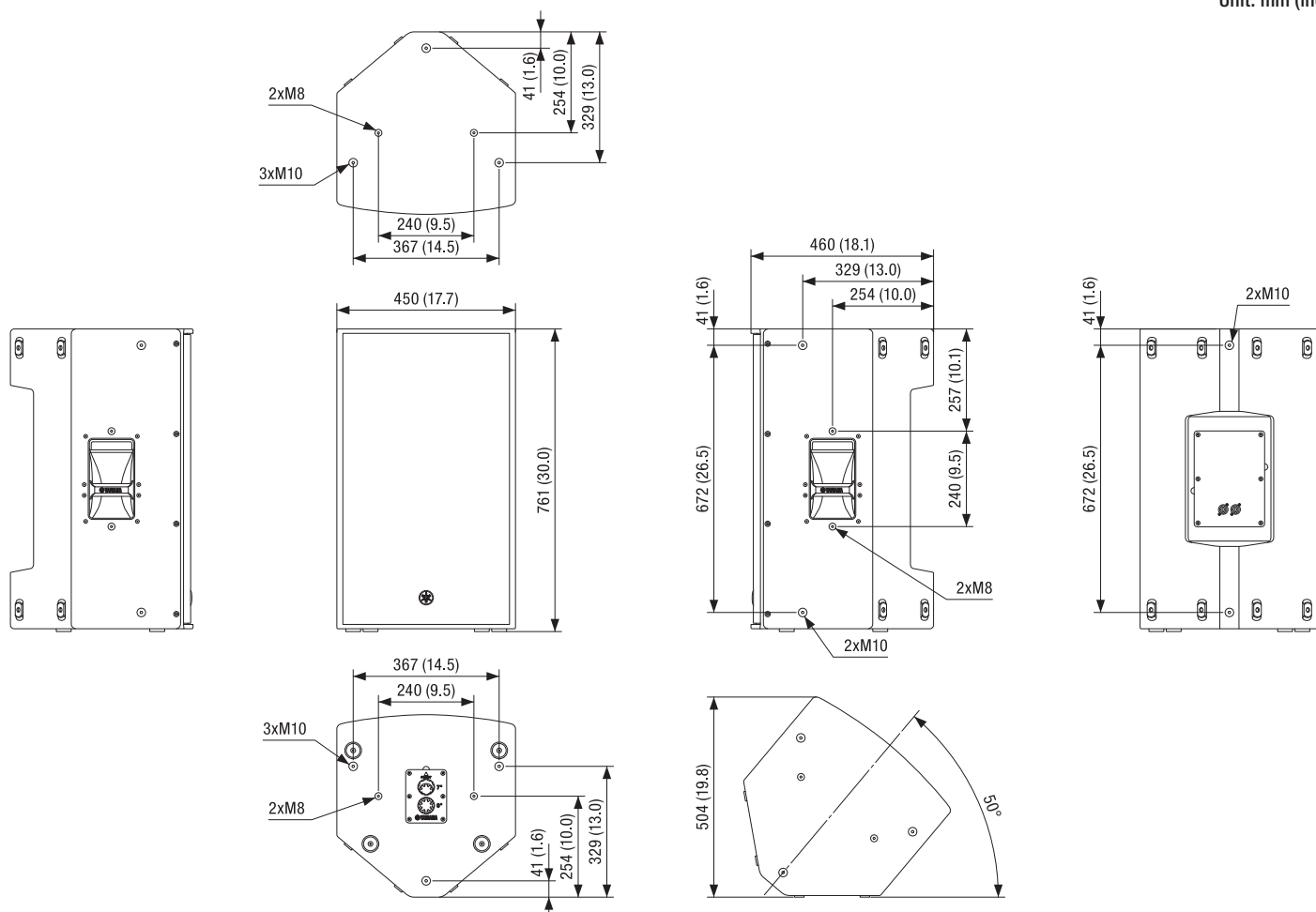
Speaker Type		2-way Speaker, Bass-reflex
Frequency Range (-10dB)		Passive: 43Hz - 20kHz, Normal (*1): 34Hz - 20kHz, FOH (*1): 33Hz - 20kHz
Coverage Area		H90° x V50° Rotatable Constant Directivity Horn
Floor Monitor Angle		50° Symmetrical
Components	LF	15" Cone, 3" Voice Coil, Neodymium magnet
	HF	2" Voice Coil, 1" Throat Compression Driver, Titanium diaphragm, Neodymium magnet
Crossover		2.0kHz
Power Rating	NOISE	Passive (EIA 426-A): 400W, Bi-amp LF (EIA 426-A): 400W, HF (AES): 50W
	PGM	Passive (EIA 426-A): 800W, Bi-amp LF (EIA 426-A): 800W, HF (AES): 100W
	PEAK	Passive (EIA 426-A): 1600W, Bi-amp LF (EIA 426-A): 1600W, HF (AES): 200W
Nominal Impedance		Passive: 8Ω, Bi-amp: LF: 8Ω, HF: 16Ω
SPL	Sensitivity (1W; 1m on axis)	Passive: 97dB SPL, Bi-amp: LF: 99dB SPL, HF: 108dB SPL
	Peak (Calculated)	Passive: 129 dB SPL, Bi-amp: LF: 131dB SPL, HF: 131dB SPL
I/O Connectors		SpeakON NL4MP x 2 (Parallel)
Handle		Aluminium die-cast, Side x 2
Pole Socket		Ø35mm x 2 (0° or -7°)
Rigging		M10 x 12
Dimensions (W x H x D)		450mm x 761mm (with rubber feet) x 460mm (17.7" x 30.0" x 18.1")
Net Weight		21.3kg (47.0lbs)
Options		Bracket: UB-DZR15H/V, Cover: SPCVR-DZR15
Others		Enclosure Material, Finish, Color: Plywood, Durable Polyurea coating, Black/White

\*1 With recommended DSP processing.

\*2 Half space (2π).

## Dimensions

Unit: mm (inch)



## Options

- Speaker Cover SPCVR-DZR15
- U-Brackets UB-DZR15H/UB-DZR15HW/UB-DZR15V/UB-DZR15VW

## Architectural and Engineering Specifications

---

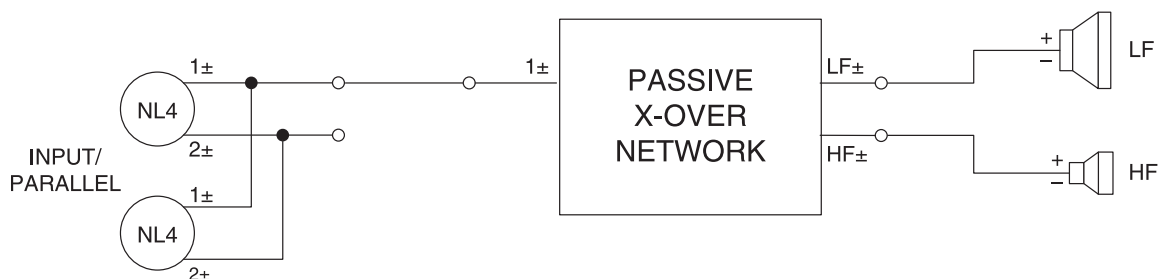
The Yamaha CZR15 shall be a passive loudspeaker for sound reinforcement applications. The loudspeaker shall be a full-range, two-way, bass-reflex type. The loudspeaker shall have one 15" cone low-frequency transducer with a 3" voice coil, and one 1" throat high-frequency compression driver with 2" voice coil and titanium diaphragm. Continuous program power capacity shall be 800 watts in passive mode, or 800 watts to the LF driver and 100 watts to the HF driver in bi-amplified mode. The crossover frequency of the passive crossover network shall be 2.0 kHz. The loudspeaker shall be capable of meeting the following performance criteria: reproduction frequency range shall be 43 Hz to 20 kHz (-10 dB) when used without equalization, and maximum output SPL shall be 129 dB (peak, pink noise @ 1m, passive mode). Coverage angles shall be 90° horizontal and 50° vertical. The horn shall be rotatable to allow a 90° shift in coverage angles when required. Two parallel-connected SpeakON connectors shall be provided for input.

The loudspeaker shall be designed for full compatibility with the speaker tuning capabilities of Yamaha PX series amplifiers or other speaker processors in order to deliver optimum system performance in a variety of environments.

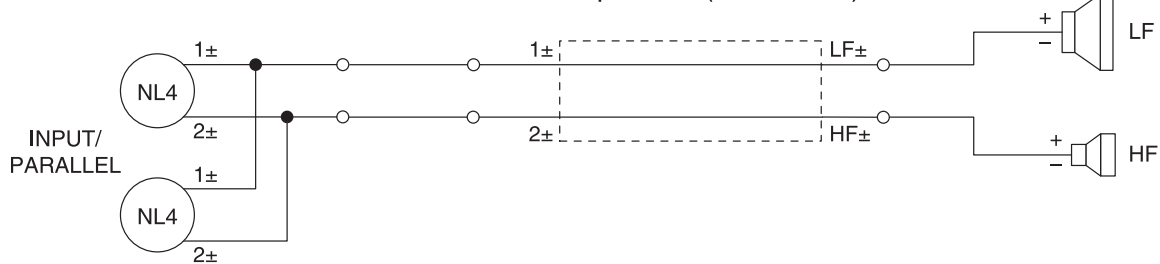
The loudspeaker enclosure shall be constructed of high-grade plywood and finished with a durable polyurea coating. Rigging points shall be provided for use with standard eyebolts, and optional U Brackets will offer a variety of mounting configurations. The dimensions of the loudspeaker shall be 450 x 761 x 460 mm (W x H x D, including rubber feet). The weight shall be 21.3 kg.

## Block Diagrams

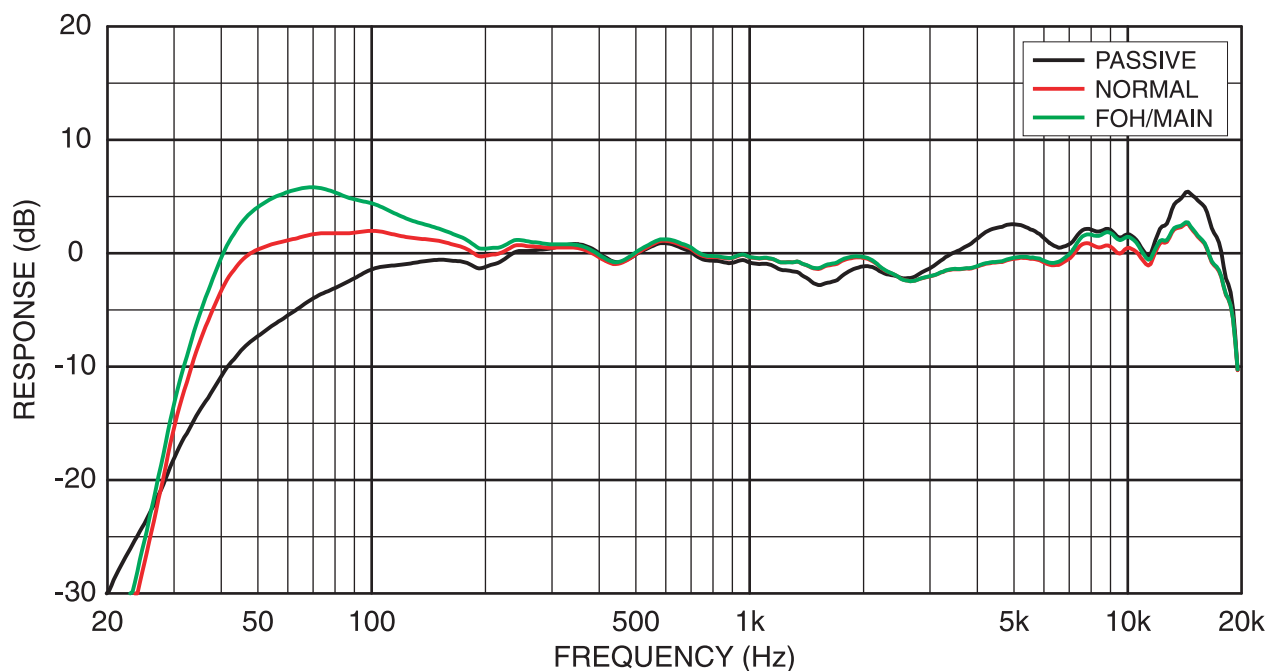
Passive mode (Factory setting)



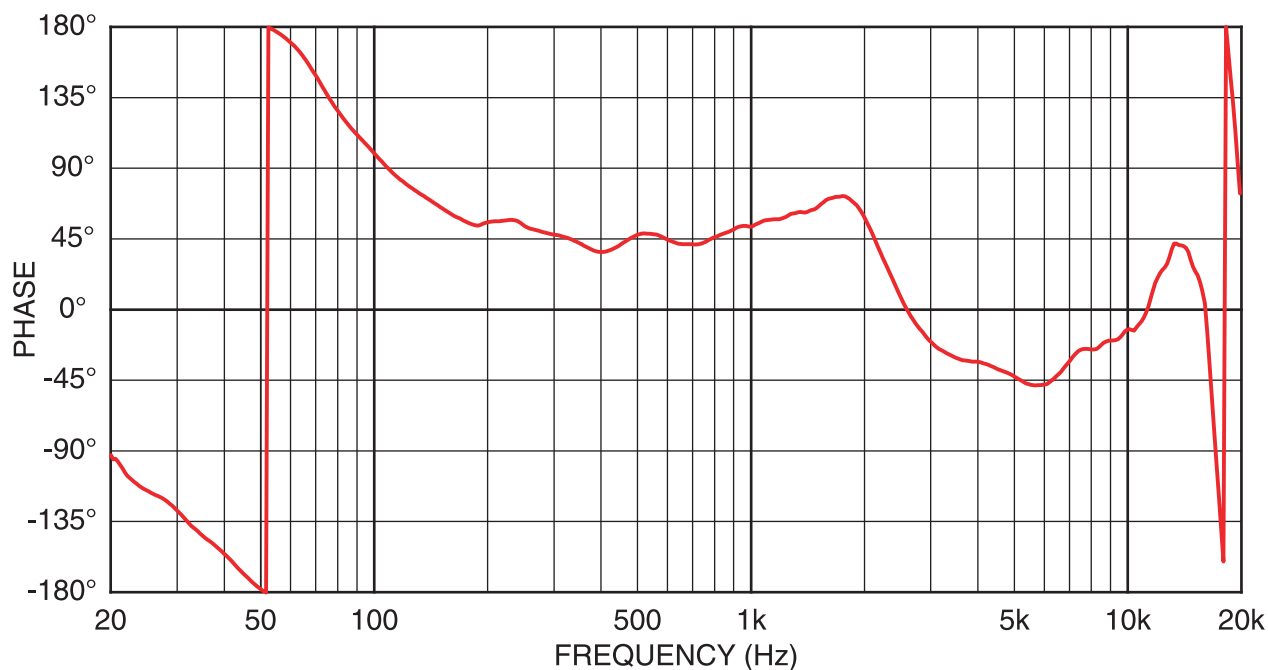
Bi-amp mode (Selectable)



## Frequency Response

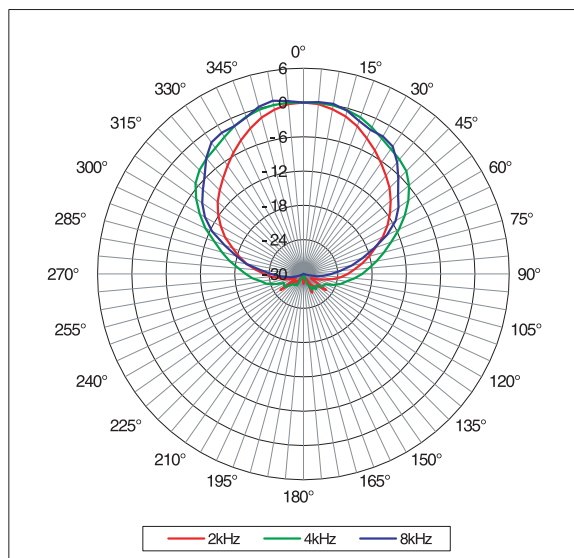


## Phase Response



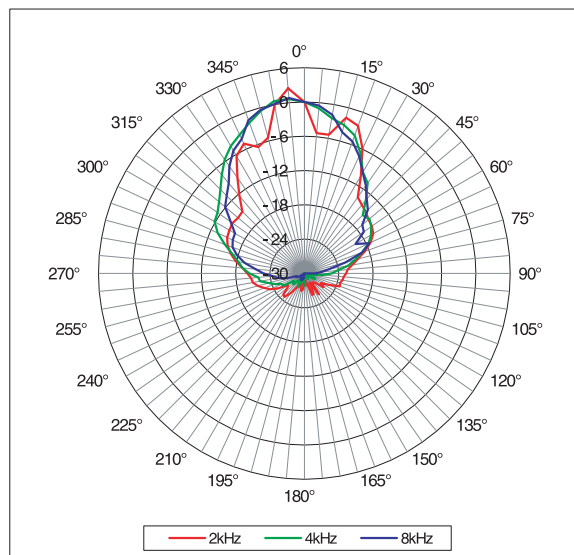
## Horizontal Polar Plots

Horizontal



## Vertical Polar Plots

Vertical



\*All information subject to change without notice.

\*All trademarks and registered trademarks are property of their respective owners.

Created in June, 2020

**YAMAHA CORPORATION**  
P.O.BOX 1, Hamamatsu Japan  
[www.yamaha.com/proaudio/](http://www.yamaha.com/proaudio/)